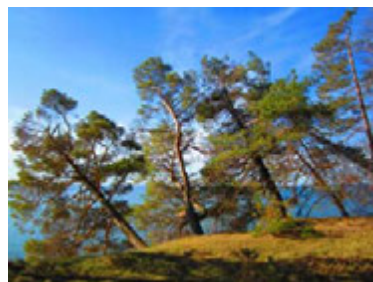
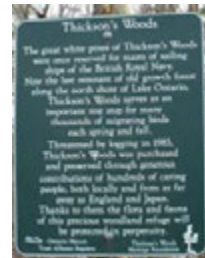


Accessible Trails - Thickson's Woods Land Trust

Dan Shire – Thickson's Woods Land Trust
October 22, 2015



Thickson's Woods Land Trust



An urban land trust:

- Lake Ontario shoreline in Whitby
- Surrounded by industrial development and infrastructure (401, GO, VIA Rail)
- 16 acres of forest – old growth pine – never logged
- 9 acres of meadow – former farmer's field destined for a distribution centre
- saved from logging, housing development and industrial development by a grassroots organization of environmentalists and birders

Ontario - Accessibility for Ontarians with Disabilities Act (2005)

AODA:

- 5 sets of standards
 - Customer service – January 2008
 - Integrated Accessibility Standards – July 2011
 - Information and Communications
 - Employment
 - Transportation
 - Public spaces/Built environment – January 2013

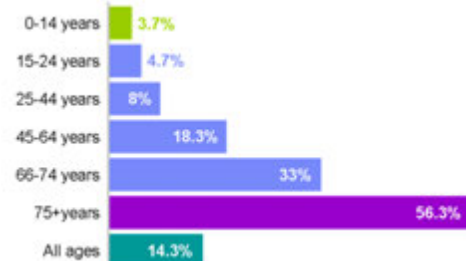
Volunteer organizations (no employees) have minimal regulatory responsibility under the AODA regulations

- Trails fall under the Built environment standards
 - For non-profit and natural sites, the requirements are NOT onerous
- Information and Communication - e.g. web sites, signage, newsletters
 - Consideration should be given to providing accessible formats

3

Land Trusts & Accessibility

- Public engagement – involve and educate the widest possible audience
- Social responsibility – land trust organizations are composed of people with disabilities too, we have family & friends with a disability or limitation
- Attract more supporters
 - Financial (our supporters tend to be older individuals, interested in supporting a legacy of conservation)
 - Individuals who believe in the importance of nature are more likely to advocate for protection of wild spaces and help us protect those spaces
- Economic benefits to our community and province
 - Eco-tourism
 - Projects and infrastructure
- Disability rates rise with age
 - Consider your membership and donor demographics



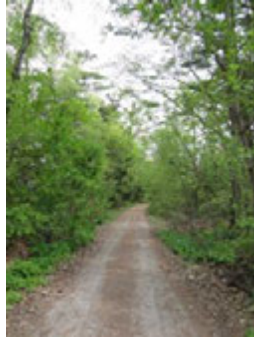
4

Thickson's Woods Trails

- Current Trail system is a mix of trail types
 - Waterfront trail
 - Footpaths
 - Laneways to private properties



Waterfront Trail – wide & paved, shared with bikes & runners. The Waterfront Trail bisects the land trust properties.



Laneways – level & unpaved



Forest paths – most with elevation changes, natural obstructions (roots, branches), 2 foot bridges, natural surfaces



Forest path – entrance wide and level with patio stones

5

Thickson's Woods Trails

- Current Trail system:
 - 0.7 km not fully accessible (mobility restrictions due to natural terrain)
 - 1.2 km accessible – wide & firm trails, ramps, etc.

Corbett Creek barrier beach (Region and CLOCA)



6

Naturally Accessible – Discovering Ontario’s Land Trusts

Naturally Accessible – Discovering Ontario’s Land Trusts

An initiative of the Ontario Land Trust Alliance (OLTA) in partnership with the Accessibility Directorate of Ontario.

Funded through the provincial ADO’s EnAbling Change grant program.

Goals

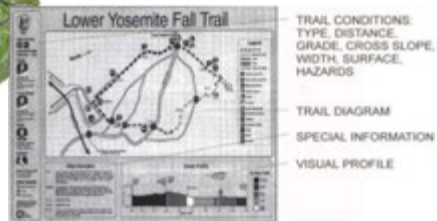
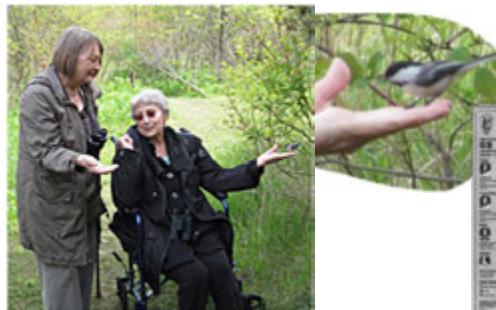
- Educate and train Ontario’s land trusts and other conservation partners on what they need to do under the Accessibility for Ontarians with Disabilities Act, 2005 (AODA)
- Work with land trusts to promote and grow accessible recreational and educational opportunities they offer the public through their conservation properties and programs

7

Naturally Accessible – Discovering Ontario’s Land Trusts

Develop trails with

- Accessibility features – width, slope, etc.
- Signage – clear, tactile, Braille
- Multi-sensory (sound, smell, sight)
- Navigation cues, physical and audio
- Informative signage – e.g. terrain
- Clear policy for service animals



8

More information:

Visit the Naturally Accessible web site

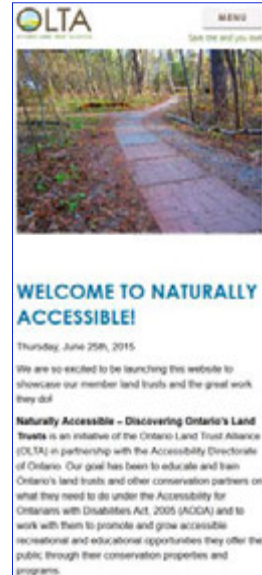
<http://ontariolandtrusts.ca/welcome-to-naturally-accessible>

Provincial guidance on the AODA

<https://www.ontario.ca/page/accessibility-laws>

For information on this presentation,
please contact:

Dan Shire
dan.shire@sympatico.ca



OLTA MENU
Take the next step!

WELCOME TO NATURALLY ACCESSIBLE!
Thursday, June 25th, 2015

We are so excited to be launching this website to showcase our member land trusts and the great work they do!

Naturally Accessible - Discovering Ontario's Land Trusts is an initiative of the Ontario Land Trust Alliance (OLTA) in partnership with the Accessibility Directorate of Ontario. Our goal has been to educate and train Ontario's land trusts and other conservation partners on what they need to do under the Accessibility for Ontarians with Disabilities Act, 2005 (AODA) and to work with them to promote and grow accessible recreational and educational opportunities they offer the public through their conservation properties and programs.