

Paradigm of Place

Some Indigenous Perspectives on the
Environment



What Do These Connections Imply?

-The connections, while not apparent, are there. Some may take time to reveal their importance. Humans do not always think within this framework and make short-sighted decisions. Our history is long. There are lessons following us.

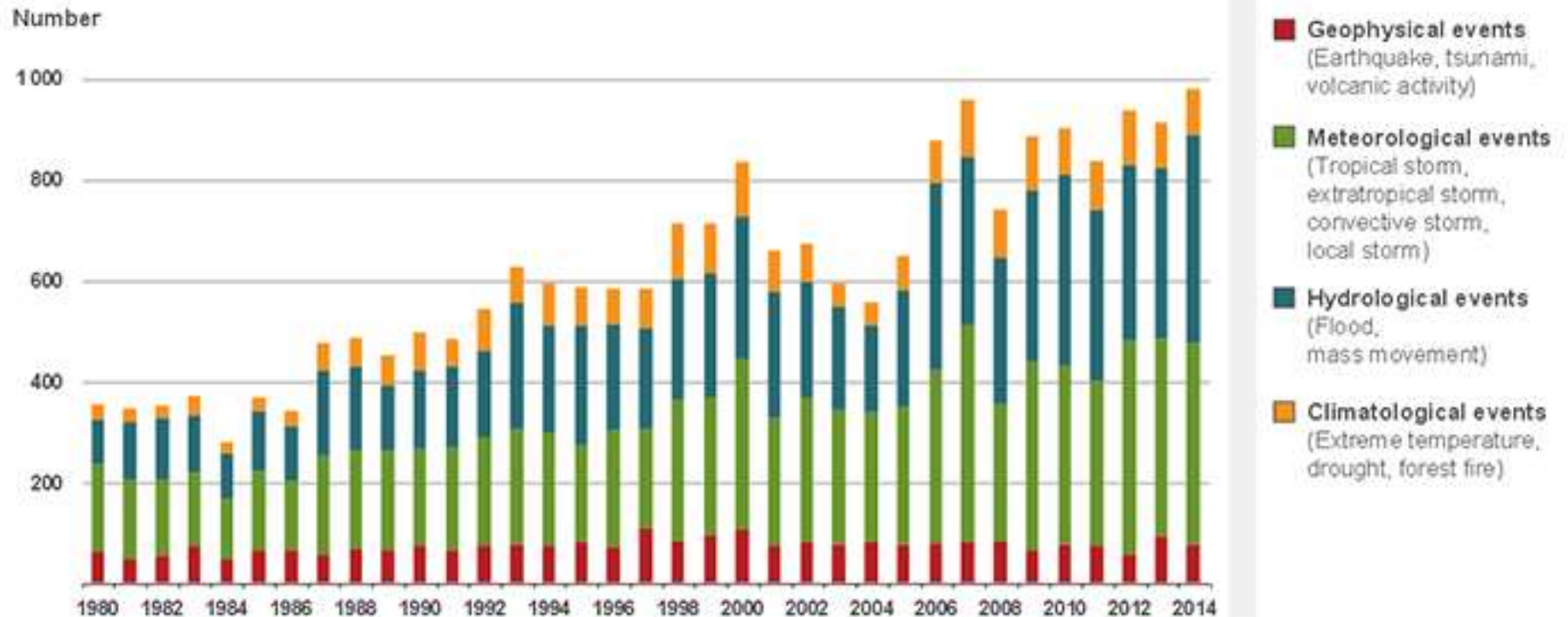
-Without the connections some dysfunction results as a result of dynamic adaptations occurring in the natural world e.g. climate change, invasive species, habitat loss and the marginalization of populations, including human. Culture is defined by ancient connections. Honour and respect them.

-Migration to more suitable environments or adapting to changes occurring in existing ones takes time. Some species may not be able to accommodate this. This is a difficult journey and humanity is not immune to the hardships.

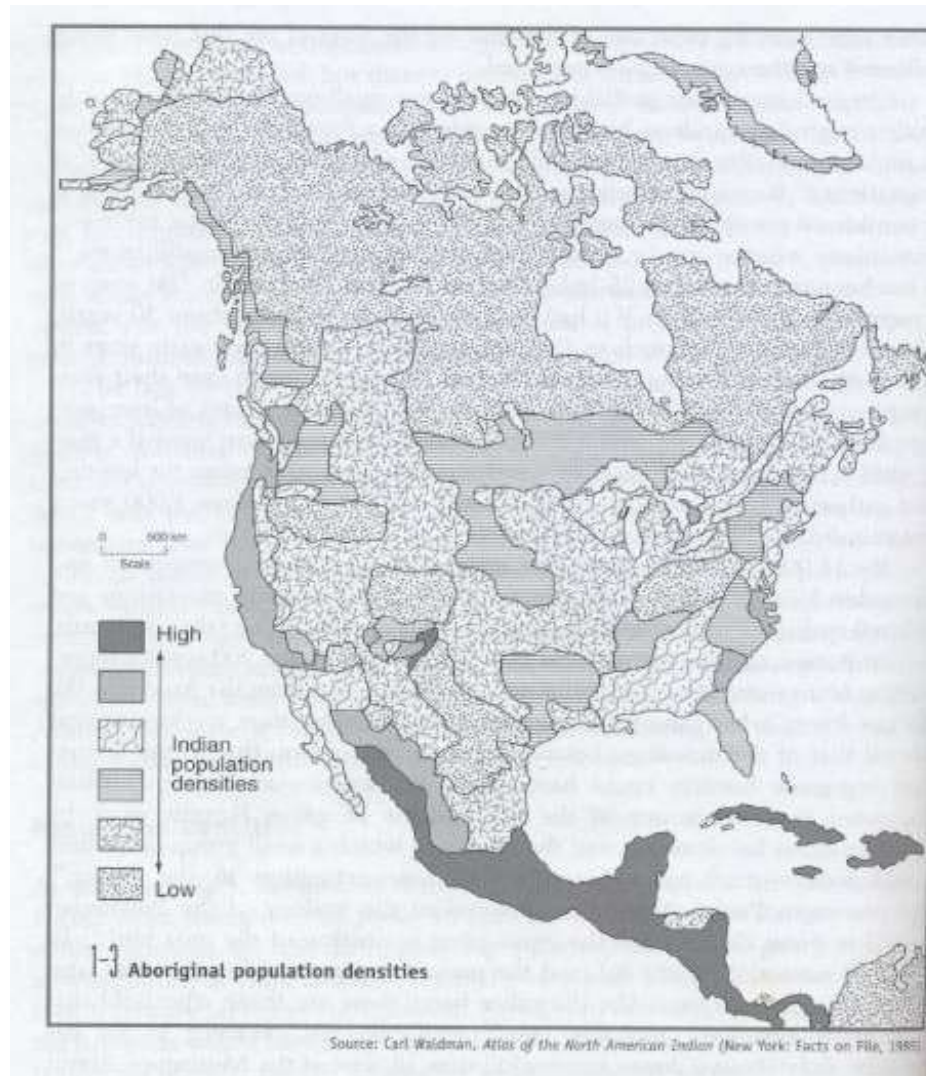
-Before we accept the changes we have induced as "natural", we must ask a couple of very important questions "Are we prepared for this?" and more importantly, "Do we know enough to predict what will happen?" I believe the answer in both cases is "No."

- Honour the connections. Study them every day. They are your friends. They can help and we all need them. Read Olive Dickason for a native perspective on Turtle Island.

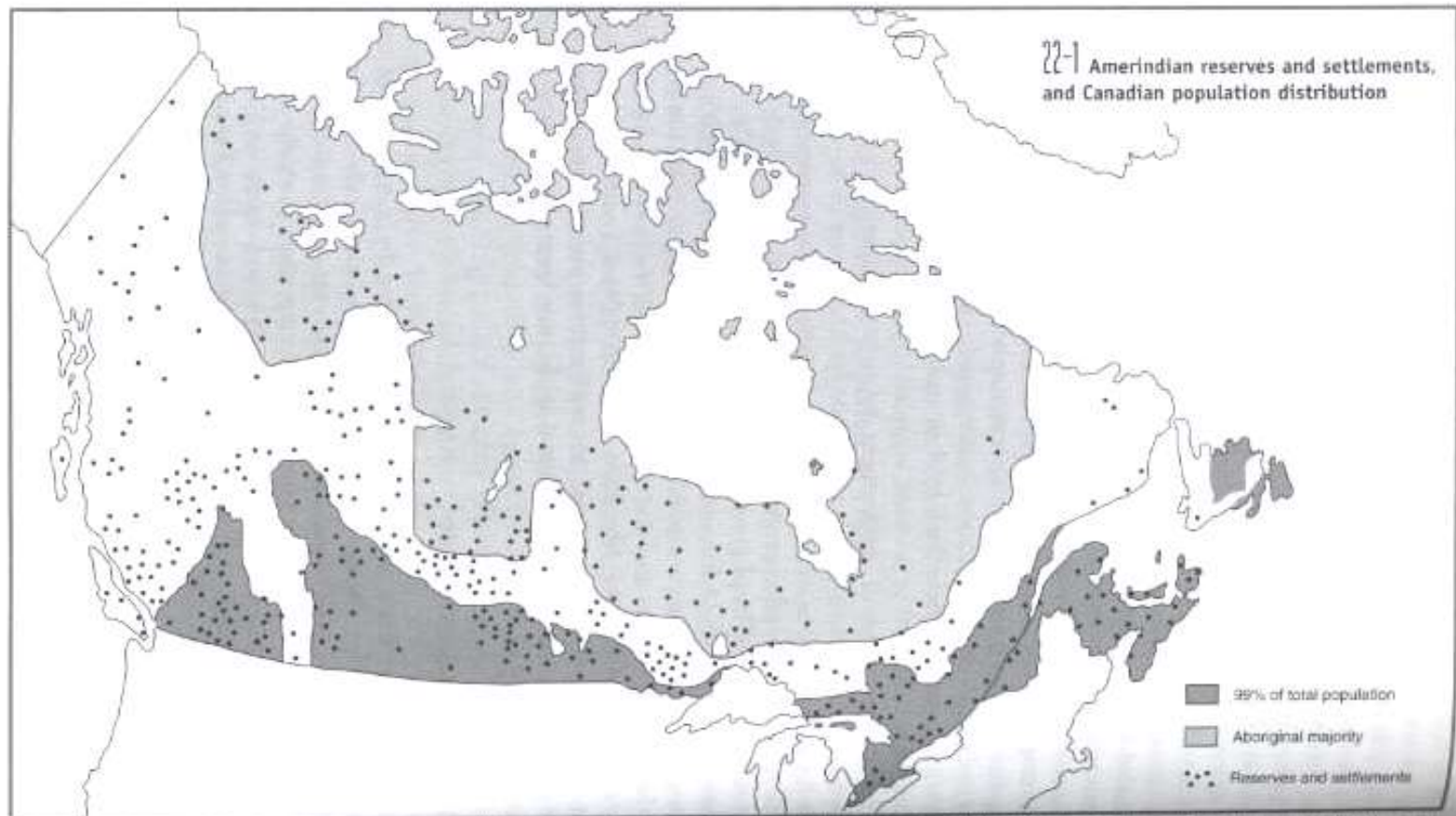
Figure. Global Disasters by type (1980-2014)



- Population densities of Indigenous Peoples prior to Contact (High >10/ sq. mile: Low < 0.5/ sq. mile)



Reserves and settlements in the Context of Canada



Source: Report of the Royal Commission on Aboriginal Peoples, II, part 2, 450; adapted from Russel Lawrence Marsh, "Canada's Aboriginal Peoples: Social Integration or Disintegration?", *Canadian Journal of Native Studies* 24, 1 (2004), and used with the permission of Brown Knowledge Services, Toronto.

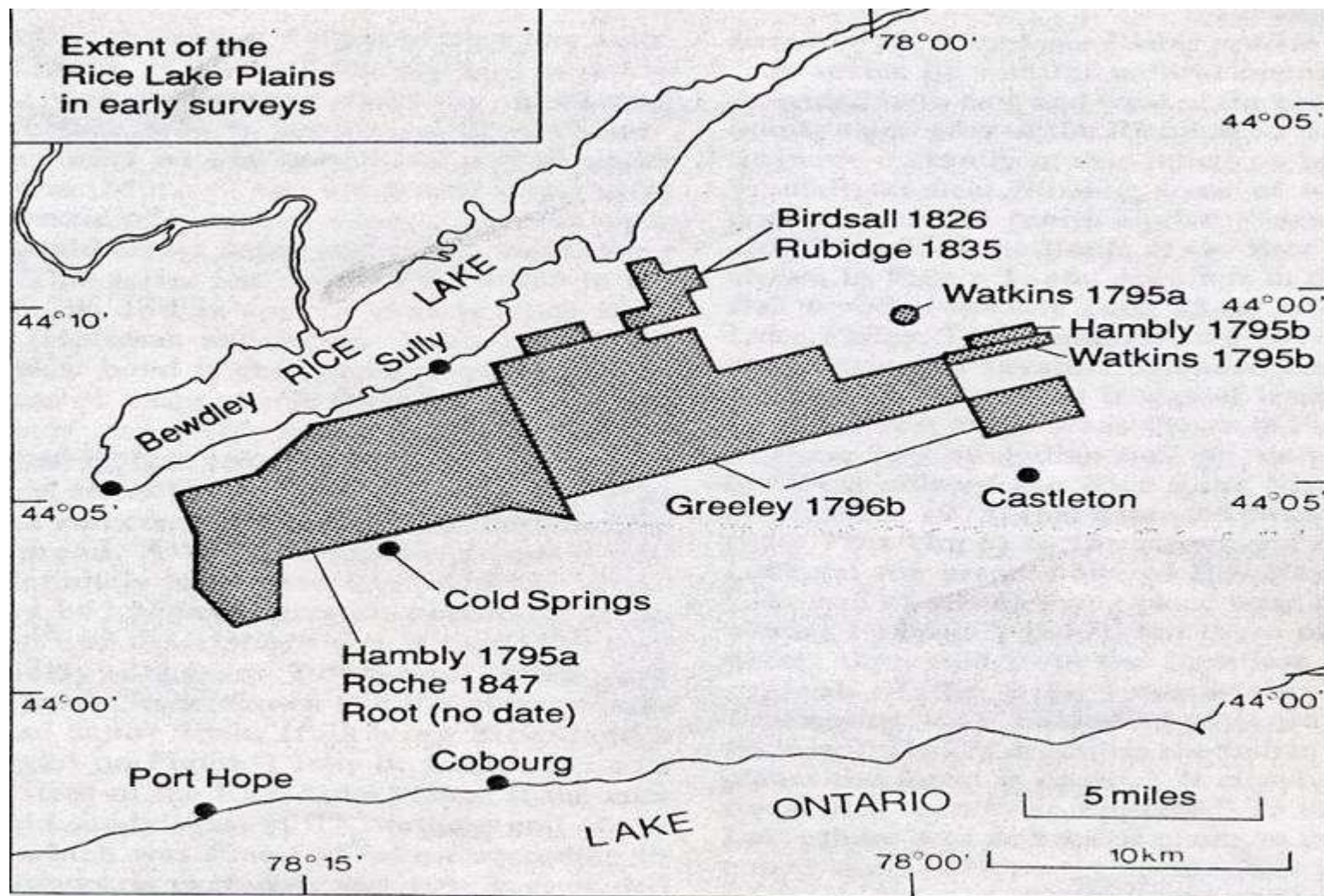


FIGURE 2. Extent of the Rice Lake Plains based on early surveys.

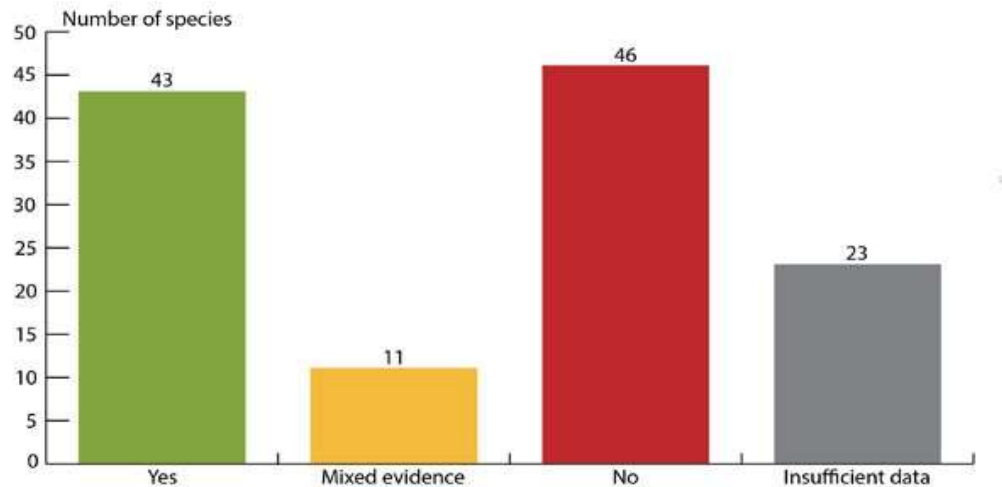
The Alderville Black Oak Savanna's mission is:

“to preserve, restore and expand this rare habitat with Alderville First Nation and the larger community and to support the values which encourage wise stewardship of the land.”



Are We making Progress?

Consistency of population trends of species at risk with the objectives, May 2016.



Source: Fisheries and Oceans Canada, Environment and Climate Change Canada, Parks Canada, and the Committee on the Status of Endangered Wildlife in Canada Secretariat (2016).

G'chi Mügwech

