

The background of the slide features a photograph of a glacier. On the left side, there is a large, white, textured mass of ice. To the right of the ice, a body of dark, teal-colored water is visible, with some smaller ice fragments floating on its surface. The overall lighting is somewhat dim, giving the image a somber and atmospheric feel.

# The Climate Change Challenge

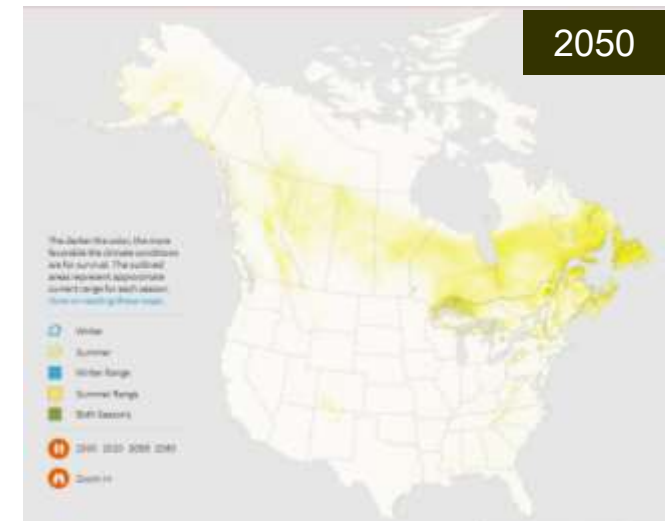
# Black-throated Green Warbler



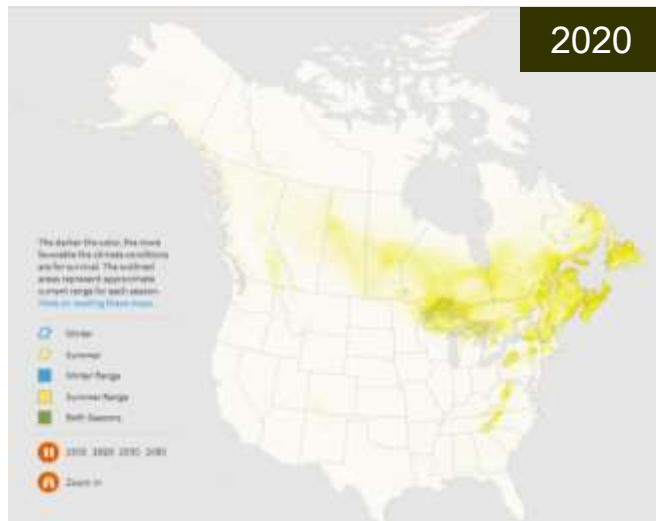
2000



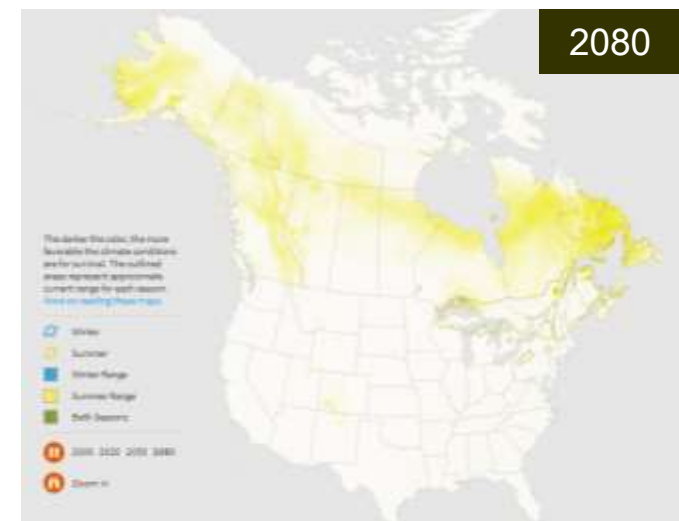
2050



2020



2080





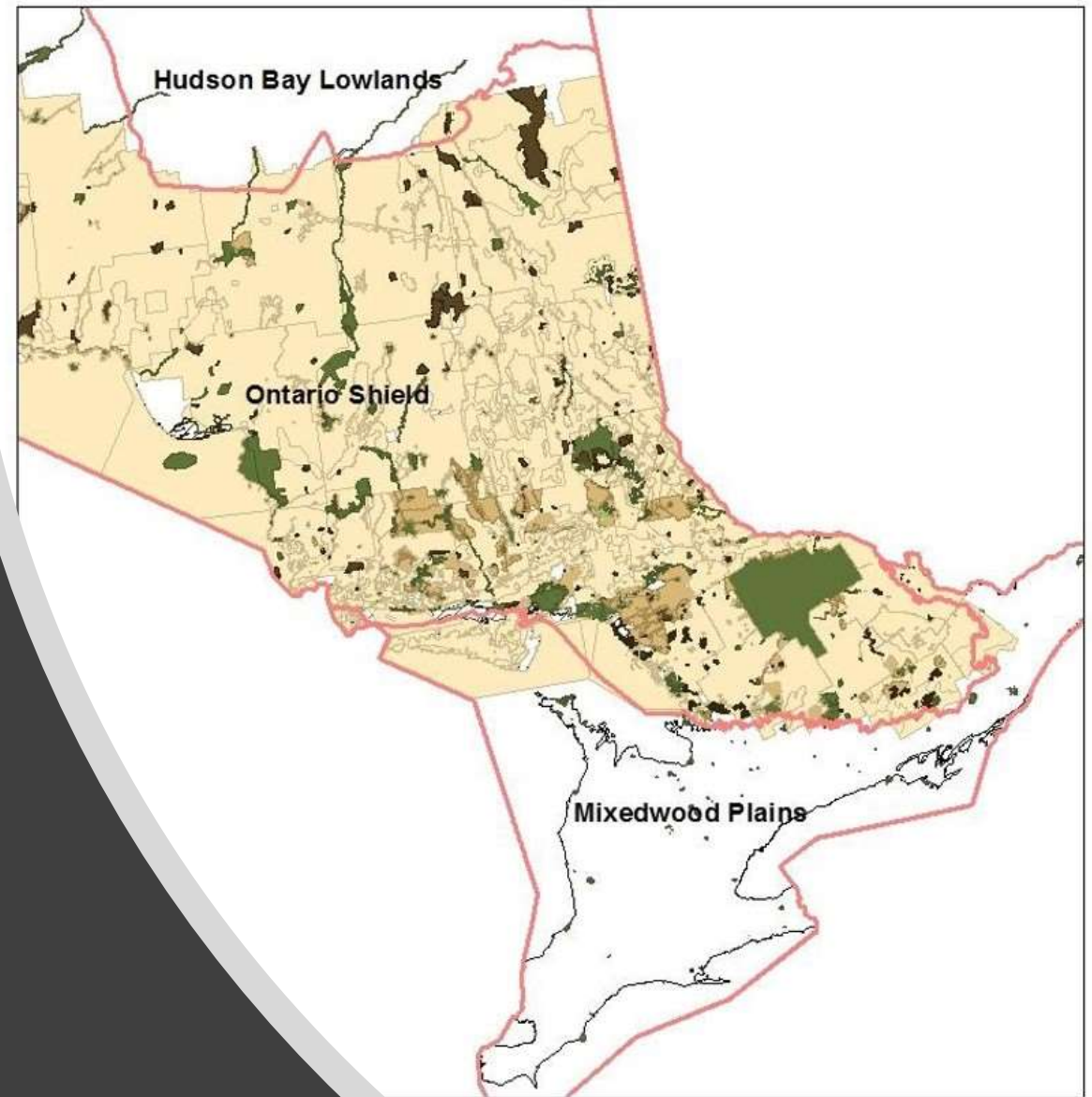


## Scale Climate Change Actions and Strategies from Single Nature Reserves to Large Scale Systems

---

# Strategies for Action

- Think big and local scale
- Protect natural areas (connectivity & carbon)
- Input into policy
- Local Mitigation and/or Adaptation
- Education & Outreach



Land Use Designations





# Ecosystem Restoration

Loss of connected habitats,  
reducing a species ability to  
adapt to changes in local  
climates

## Adaptation Strategies



Acquire lands with restoration potential that will increase connectivity of ecosystems



Select species that are drought tolerant and frost tolerant



Plant a variety of species to ensure heterogeneity



Select species that bloom early or late into the fall to allow pollinators to complete full life cycle



*Create pit and mound topography to increase microclimates*

# Landscape- scale planning



KAWARTHA LAND TRUST



*The Couchiching  
Conservancy*





## Crown Land in the Mixed Wood Plain

- 16% of Ontario = 139,262 km<sup>2</sup>
- Crown Land in Mixed Wood Plain = 14,981 km<sup>2</sup>
- Private land = ~90%

# The Changing Ontario Population

---

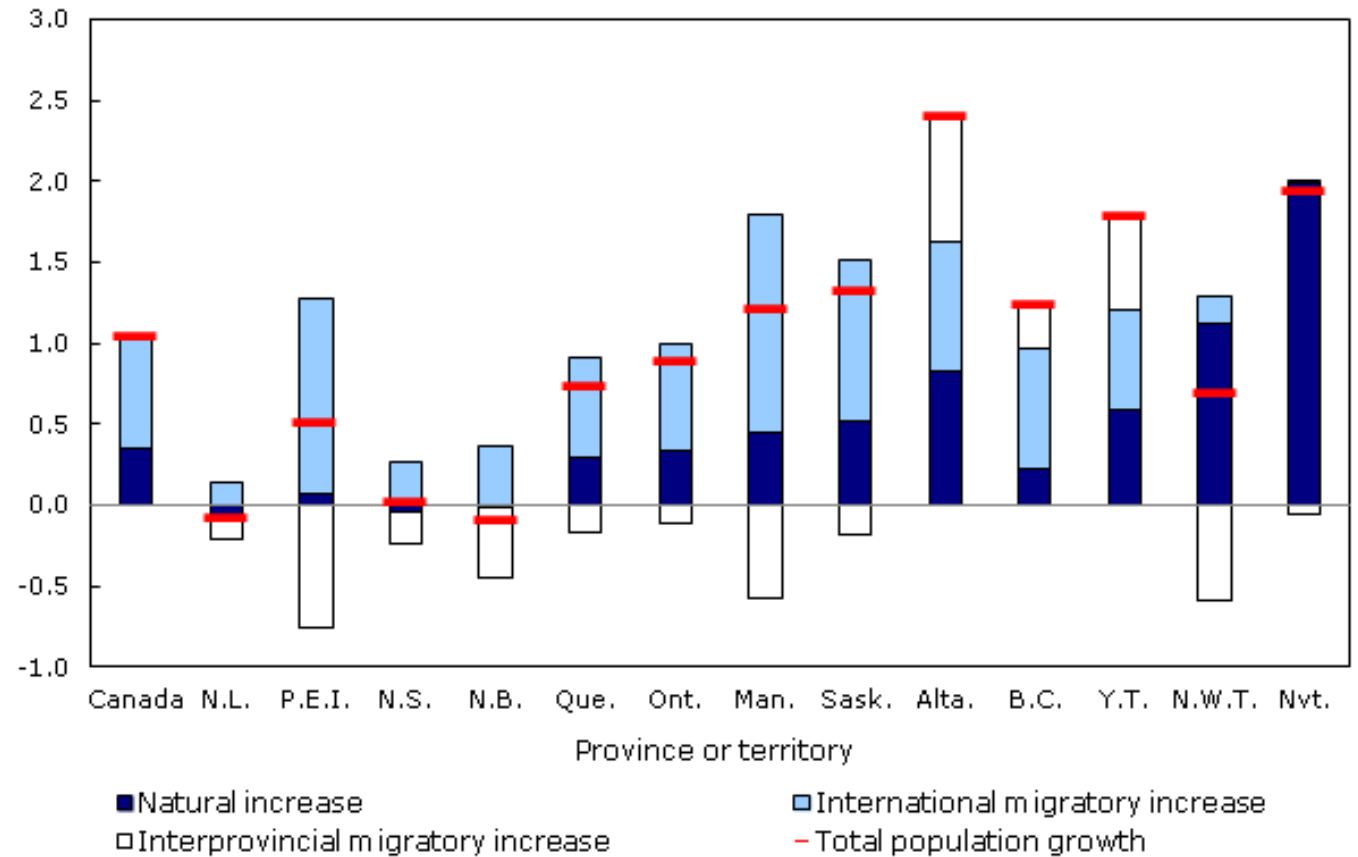


# Negative natural increase for the first time

In 2031, the percentage of individuals belonging to a visible minority could exceed 40% in Ontario

**Chart 2**  
Population growth, natural increase, international migratory increase and interprovincial migratory increase, by province or territory, 2014

percent



**Source:** Statistics Canada, Population Estimates Program, 2014.



# The Fundraising Challenge

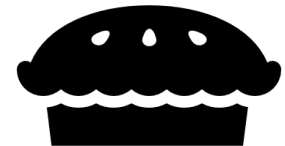
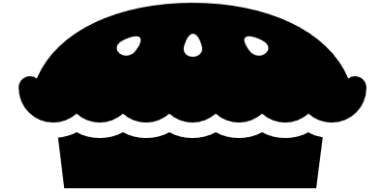
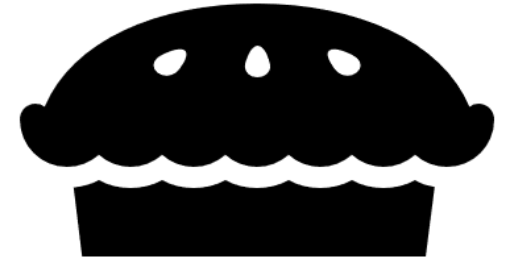
---

# Growing the pie

- > 86,000 registered charities in Canada
- Land Trusts in Ontario:
  - 23 in 2002
  - 35 in 2019
  - 103,000 acres protected (17,000 acres in last year alone)
- No financial support from province

## Opportunities


- Collaboration and joint venture
- Sharing resources
- Legacy giving





# Working for conservation with Indigenous Communities and First Nations

---



Working with respect and  
integrity to achieve conservation  
through reconciliation

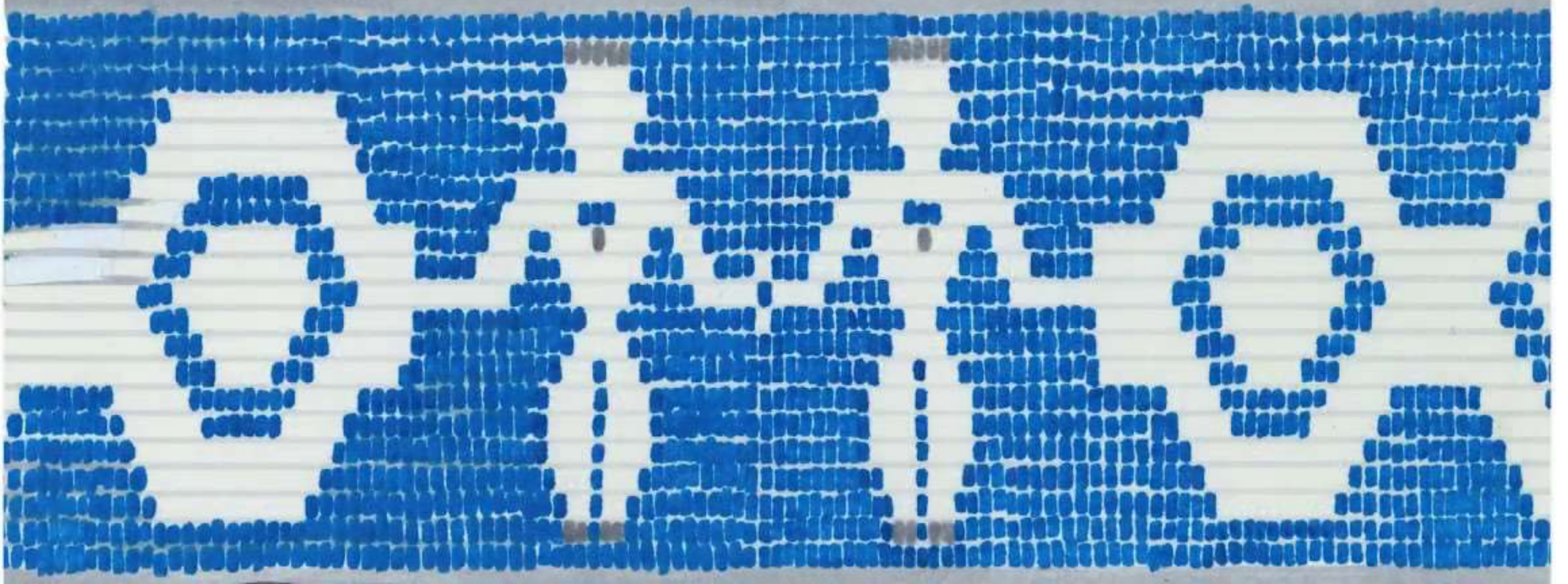
# Being part of the change

---



**Truth and Reconciliation  
Commission of Canada:  
Calls to Action**





We are all Treaty people



# *Etuaptmumk* - Two-Eyed Seeing

---

Learning to see from one eye with the strengths of Indigenous knowledges and ways of knowing, and from the other eye with the strengths of Western knowledges and ways of knowing ... and learning to use both these eyes together, for the benefit of all.



Walpole Island  
LAND TRUST



## Youth Circle for Mother Earth

Creating and supporting a cross-cultural network of Indigenous and non-Indigenous youth committed to protecting the natural world

# Protected Areas and Climate Action in Ontario: A Cross-cultural Dialogue

Kingston  
October 17-18





# Summary

- Find ways to influence policies that impact nature and conservation
- Plan for climate change, develop adaptation strategies working with partners at a landscape scale
- Engage with partner land trusts and other conservation organizations to open up new funding opportunities and achieve more through shared resources
- Engage and partner with Indigenous communities and First Nations to do conservation in a new way and protect more







*Thank You!*

Ontario  
Nature 