



Yellow Pimpernel

The Tallgrass Awakening

Hazel Bird Nature Reserve, Hamilton Township

Tallgrass Awakening

**Conservation, restoration and habitat recovery
in the Rice Lake Plains**

Mark Stabb, NCC Program Director
Val Deziel, NCC Conservation Biologist

Blood, toil, tears and sweat

**What friends, allies and a landscape plan
are doing to help restore the Rice Lake Plains**



Tallgrass Awakening in the Rice Lake Plains

- Landscape Planning
- Conservation Actions
- Rice Lake Plains Joint Initiative



Tallgrass Awakening in the Rice Lake Plains

- Landscape Planning
- Conservation Actions
- Rice Lake Plains Partnership



Nature Conservancy of Canada

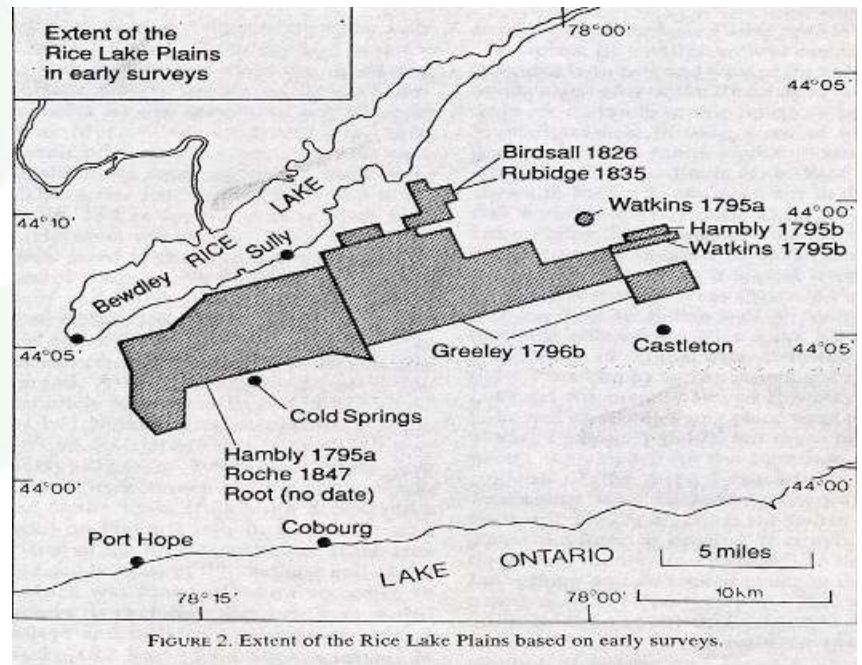
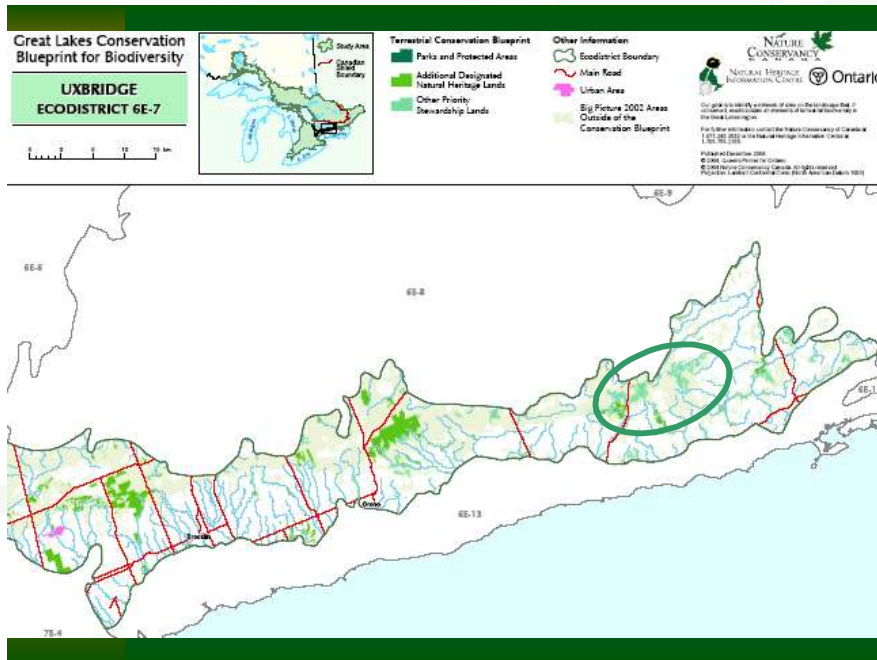
- Non-government land trust
- Over 2 million hectares protected
- Helped to protect over 83,000 hectares in Ontario
 - Directly and with partners



Barr property, 13 ha protected

Thank you!

Historical landscape of tallgrass prairie, oak savannah and oak woodland on the Oak Ridges Moraine



“Pemadashcoutayang”





The Tallgrass Communities

- Oak Woodland 25-60% tree cover
- Savanna 10-25% tree cover
- Tallgrass Prairie <10 % tree cover
- Sand Barren

Globally rare ecosystems

- Black oak woodland
- Black oak savannah
- Tallgrass prairie
- Once ~70,000 hectares across Ontario
 - Less than 3% remains in Ontario – much degraded
 - Less than 1% remains globally





Habitat for species at risk



Haven for grassland birds



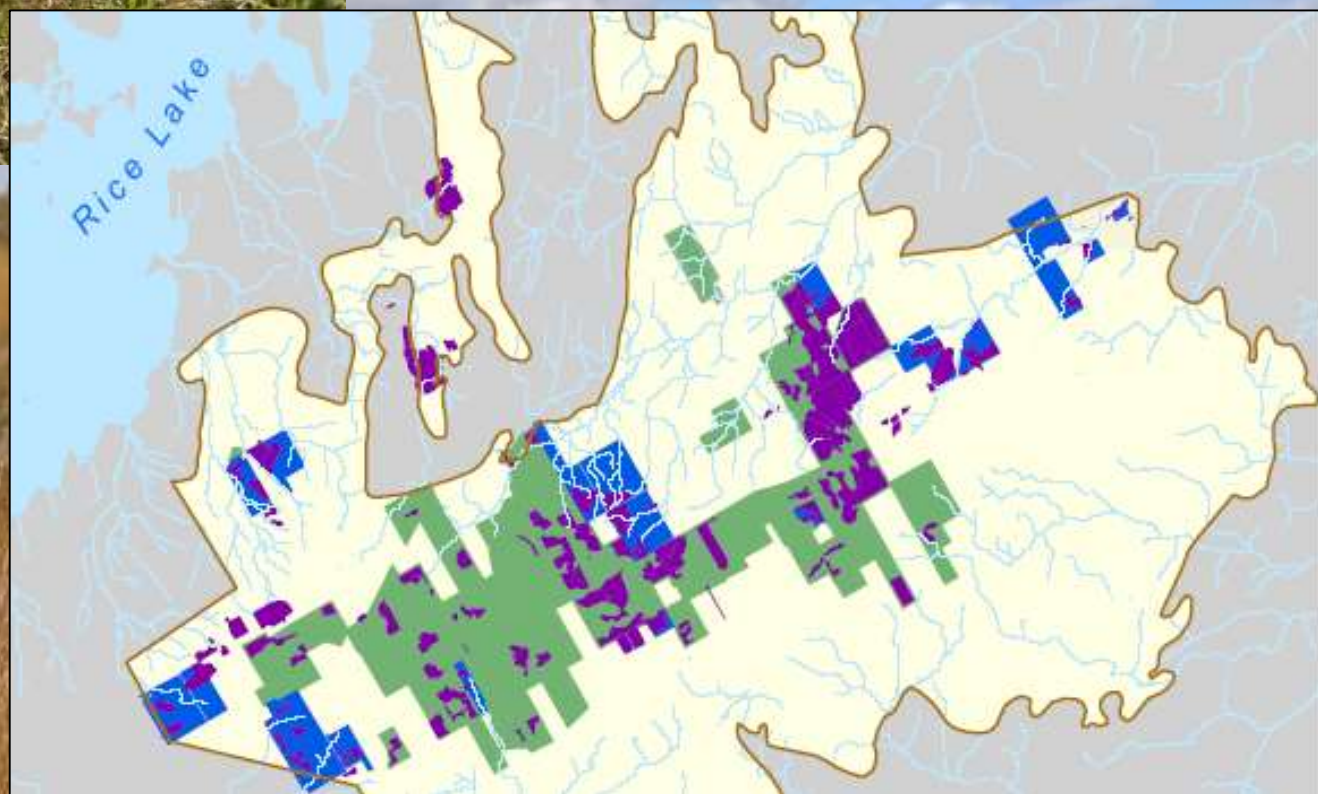
Rare but stellar tallgrass remnants



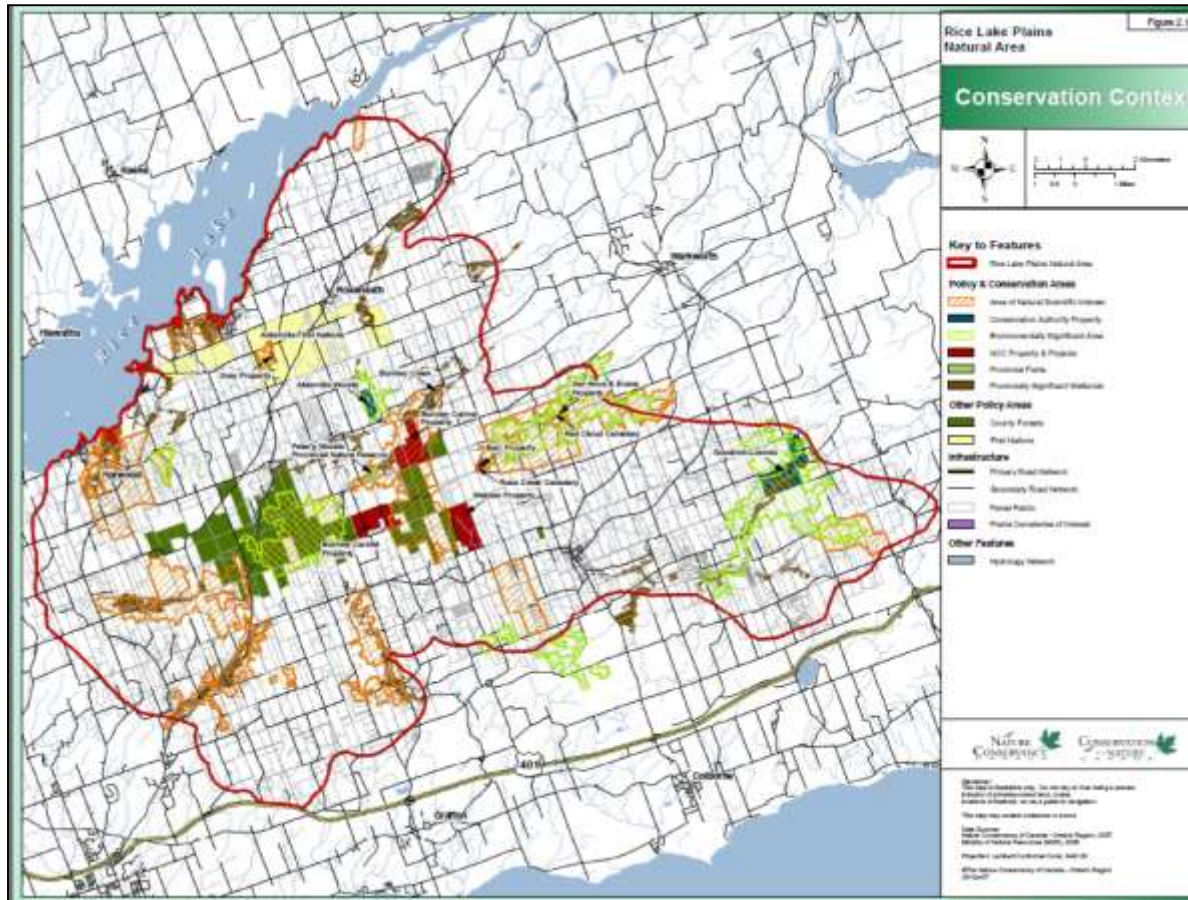
Red Cloud Cemetery Prairie



Alderville First Nation Black Oak Savannah



Rice Lake Plains Natural Area Conservation Plan



- Securement
- Stewardship
- Monitoring
- Outreach

Rice Lake Plains Partnership



- Ganaraska Conservation
- Lower Trent Conservation
- Nature Conservancy of Canada
- Northumberland County
- Ontario Parks
- Wildlife Habitat Canada/Wetland Habitat Fund

Rice Lake Plains Partnership



- Alderville First Nation
- Northumberland Land Trust
- Lone Pine Land Trust
- Ganaraska Conservation
- Lower Trent Conservation
- Ontario Parks
- Northumberland County
- Tallgrass Ontario
- Sir Sanford Fleming College
- Willow Beach Field Naturalists
- Ministry of Natural Resources and Forestry

Rice Lake Plains Partnership



THE RICE LAKE PLAINS JOINT INITIATIVE

The partners send hearty thanks to private landowners for your ongoing habitat stewardship, and for your cooperation and interest in our work this past field season. Conservation works better when we all work together.










For information about joining this partnership call the Nature Conservancy of Canada 905-862-2642 • www.natureconservancy.ca



Second edition produced by the Peterborough County Stewardship Council and the Nature Conservancy of Canada through the Rice Lake Plains Joint Initiative.

WATERSHED 25

Landowners' Guide to Watershed 25

Why Your Watershed Matters

- Water Quality
- Wildlife Habitat
- Recreation
- Agriculture
- Wetlands
- Riparian Areas
- Wetlands

Landowners' Guide to Watershed 25

Landowners within the watershed are encouraged to apply for financial assistance to help with the costs of implementing the Watershed 25 program. The program is a partnership between the Peterborough Regional Board of Health and the Nature Conservancy of Canada.

For more information, visit www.watershed25.com

Page 3