



The Path to Whole Landscape Conservation



Thom Unrau,
Director Community Conservation

Rachel Barrington,
Partners in Conservation Coordinator



KAWARTHA LAND TRUST
PARTNERS
IN CONSERVATION

Agenda

- Partners in Conservation and KLT's strategic plan
- Program purpose, structure and results
- Barriers and strategies for growth
- Regional Conservation and Climate Partnership
- Collaboration





KAWARTHA LAND TRUST

Vision: Abundant natural and productive lands that are embraced, protected and conserved by the people of the Kawarthas to sustain and enrich life.

Wild Nature

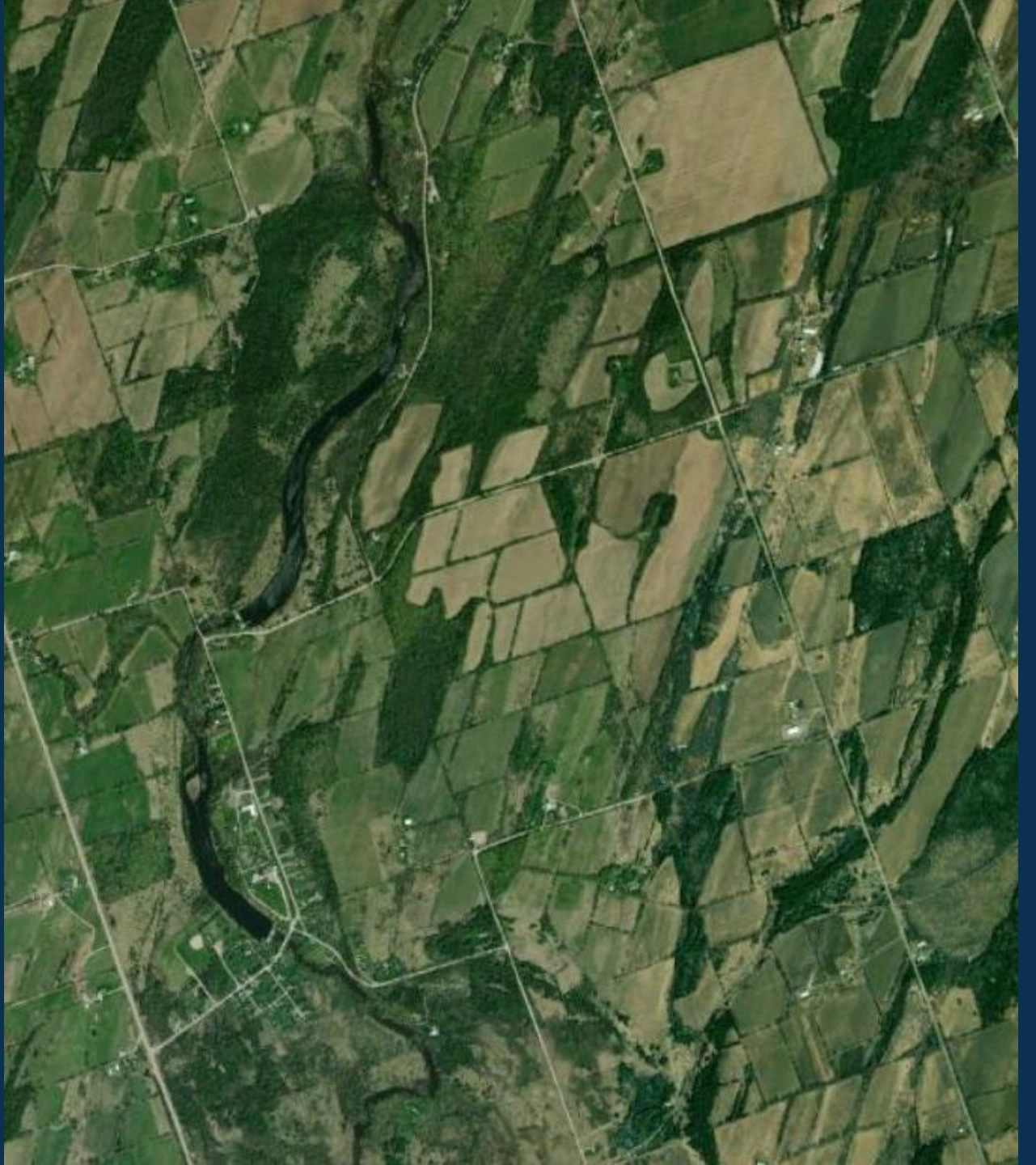
**Community Land
and Access**



**Sustainable
Working Land**

**Nature-Based Climate
Solutions**

**We are well positioned to
build trust with
landowners, and
coordinate diverse land
sector agencies.**

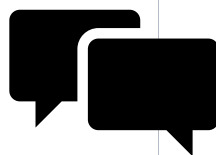




PERMENANT PROTECTION



**KLT LAND
STEWARDSHIP**



**COMMUNICATION &
EVENTS**



**PARTNERSHIPS,
LEADERSHIP**



FUNDRAISING



SYSTEMS



VOLUNTEERS



**LANDOWNER
SUPPORT
(PIC)**



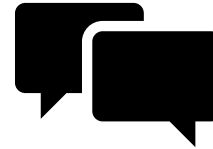
**PARTNERSHIPS,
LEADERSHIP (RCCP)**



**PERMENANT
PROTECTION**



KLT LAND STEWARDSHIP



**COMMUNICATION &
EVENTS**



FUNDRAISING



SYSTEMS



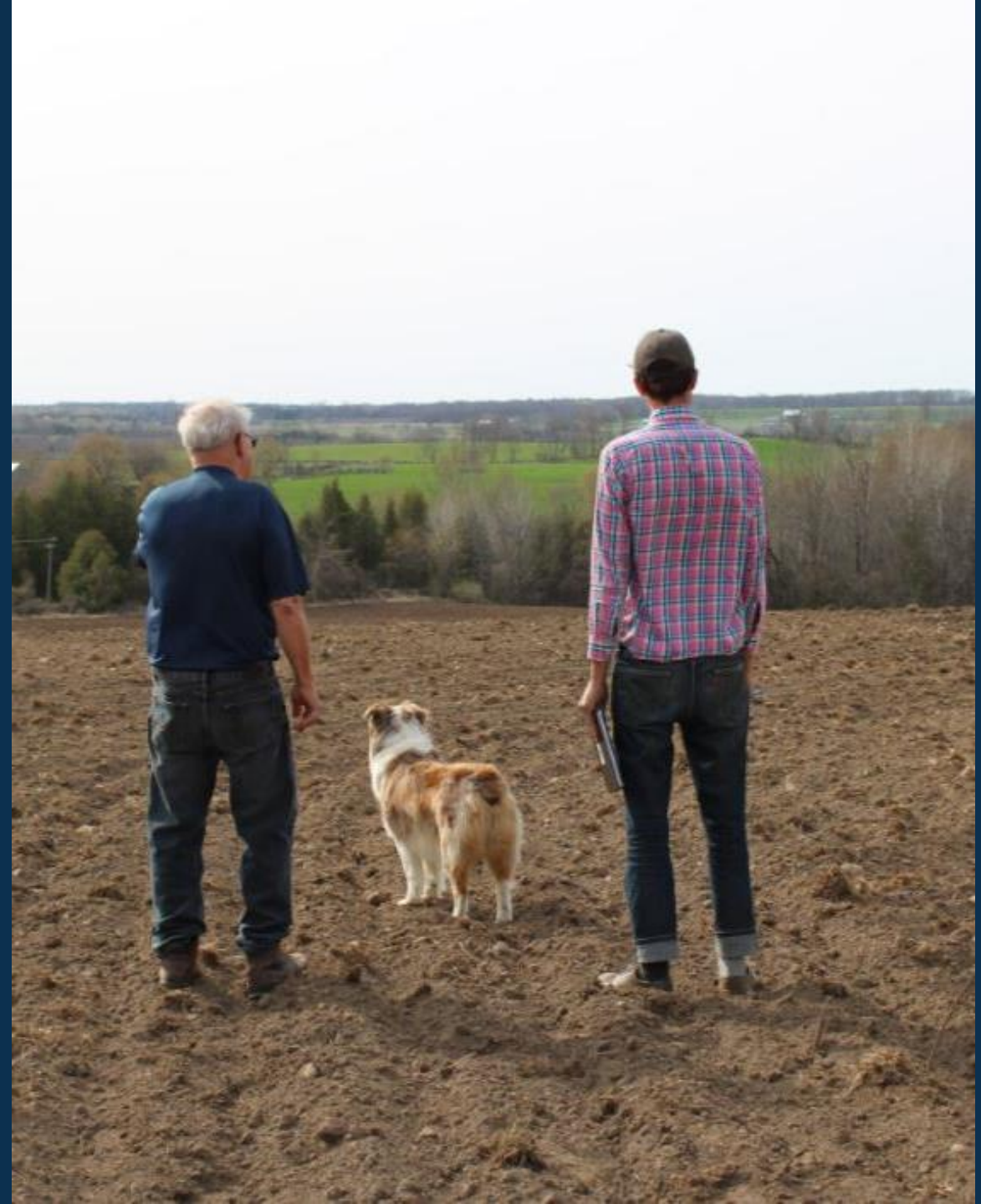
VOLUNTEERS



KAWARTHA LAND TRUST

PARTNERS
IN CONSERVATION

PIC is about the **process** of
whole landscape
conservation, not the
result.

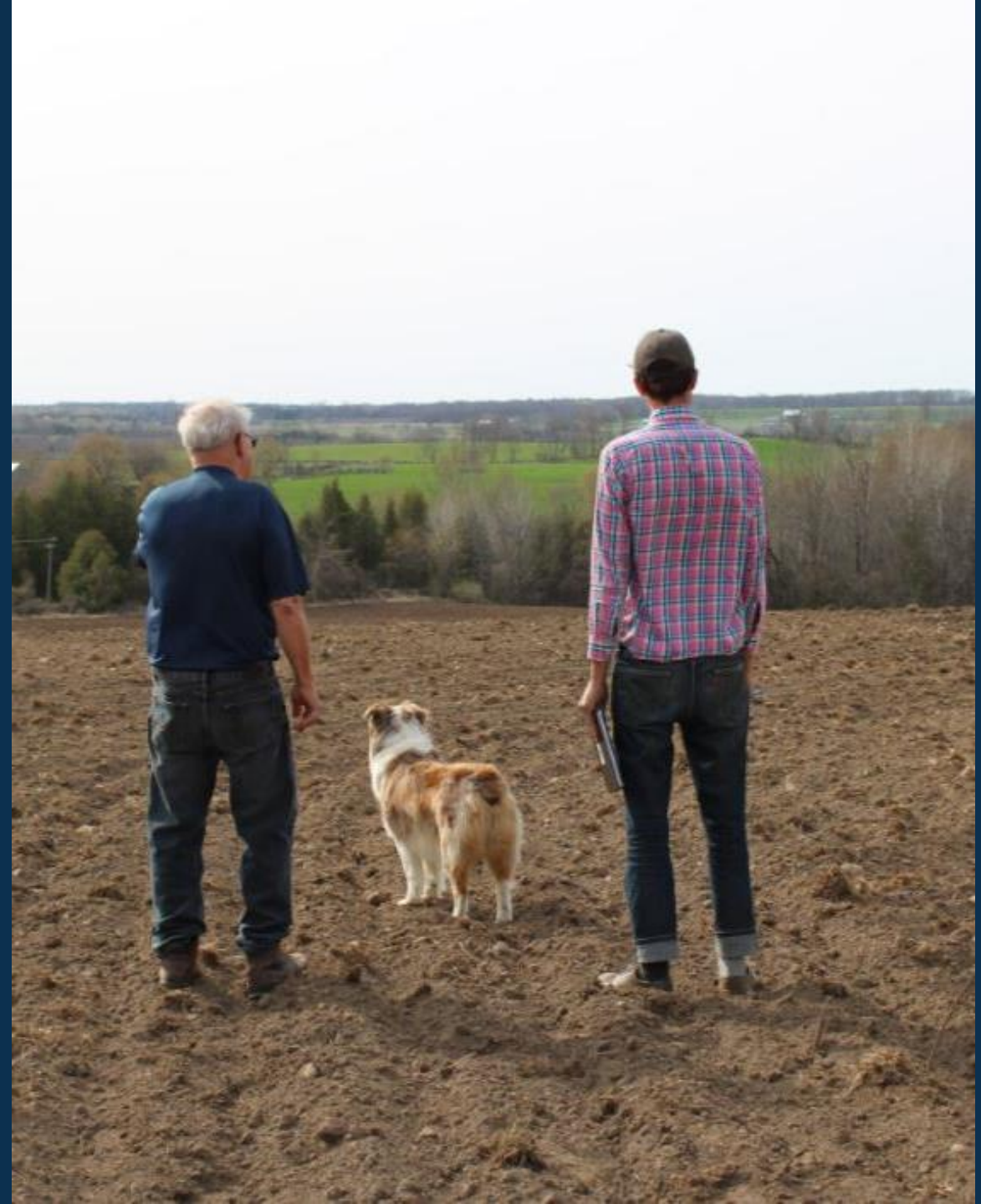




KAWARTHA LAND TRUST
PARTNERS
IN CONSERVATION

**1/Tell a good story and
build trust**

**2/Aggregate opportunity
for long term delivery**





KAWARTHA LAND TRUST
**PARTNERS
IN CONSERVATION**

Landowners participate on a volunteer-basis, with no legal obligation

Landowners receive support and stewardship through staff/volunteer visits to conduct basic ecological inventory

Priority areas have been identified, but open to anyone within service area and accept referrals



“Any landowner would benefit from the stewardship report. They’re beautiful and informative.”



ACREAGE BY LAND TYPE (14,011 TOTAL)



FOREST



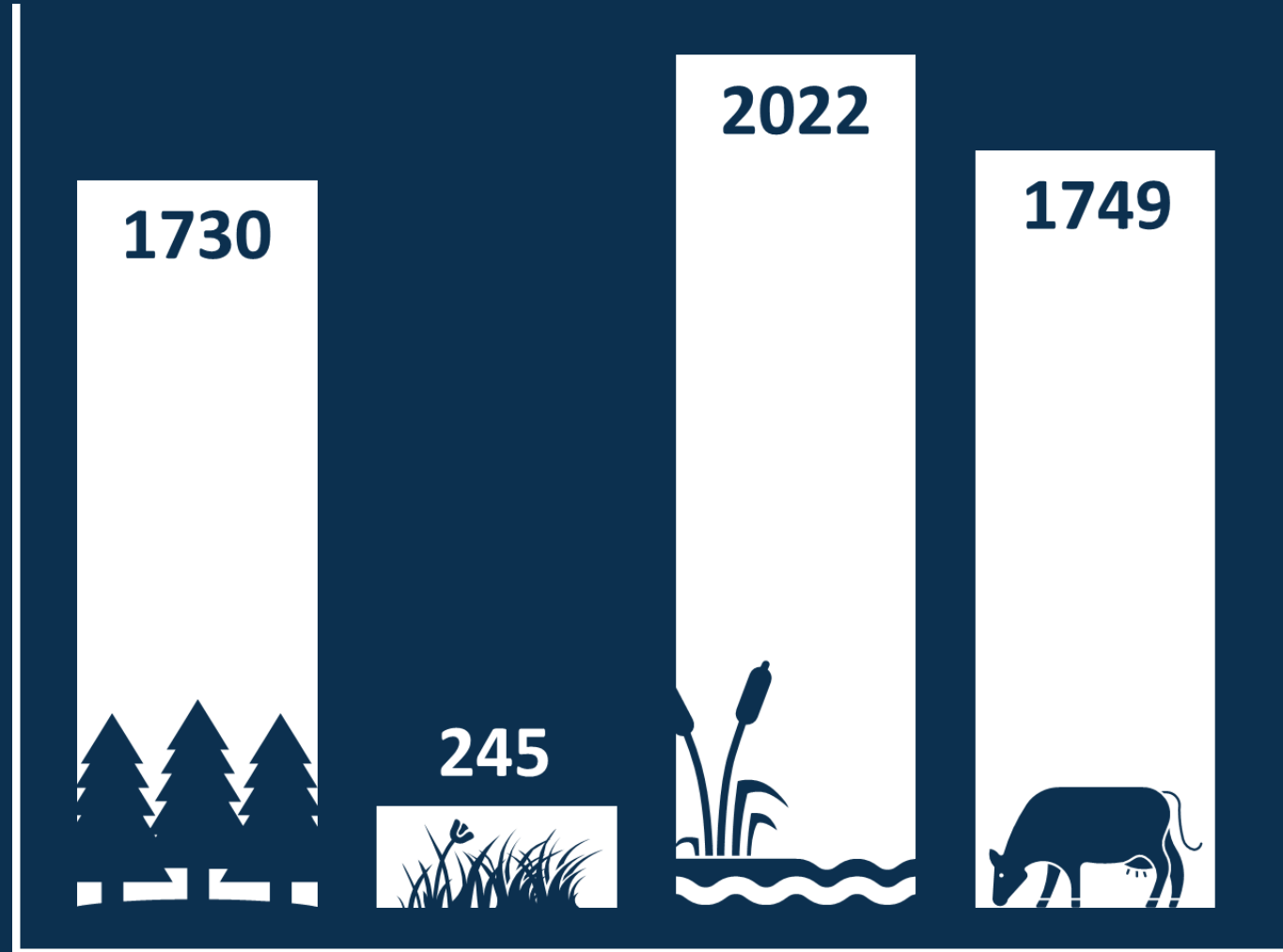
MEADOW



WETLAND



AGRICULTURE





KAWARTHA LAND TRUST
PARTNERS
IN CONSERVATION



102 Landowners



**60 Stewardship
Guides**



**Successful
Partnerships**






**Volunteers &
Students Involved**

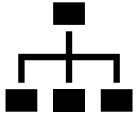


**Community
Engagement &
Brand Recognition**

218 DELIVERABLES

-  WORKING LANDS
-  OTHER
-  LAND REPORTS
-  INVENTORY
-  HABITAT MANAGEMENT
-  COMMUNITY USE
-  ADMIN





Integration



Staff Support



Salesforce/GIS



Replication



Organizational
Partner Support

Your land and KLT.

You have options.

Landowners working with Kawartha Land Trust can collaborate with us on permanent land protection options or temporary projects.

We will work with you to secure vital habitat for wildlife and ensure your forests and wetlands remain intact.

Explore the conservation options for landowners below. If you have questions, please reach out to us at protectland@kawarthalandtrust.org or call 705-743-5599.

Option 1:

Protect Your Land Forever.

Donate Your Land.

Explore This Option

Option 2:

Protect Your Land's Legacy.

Conservation Easement Agreement.

Explore This Option

Option 3:

Supporting Nature Together.

Partners In Conservation.

Explore This Option

Prospect (21)	Qualification (22)	In Progress (16)	Complete - Yes (43)	Complete - No (9)
2,754 Property Zack Prospect	2,437 Bob Qualification	2,419 Hunt Camp George In Progress	6,401 Alex Complete - Yes	415.73 Complete - No
Property Randall Prospect	Property Linda Qualification	Property Kim In Progress	Farm Elicia Complete - Yes	Complete - No
Property Len Prospect	Property Terrance Qualification	Property Dan In Progress	Farms Roger Complete - Yes	Complete - No



Learning



Perspective



Expertise



Action

“We're happy to have been part of the salamander study and to have had the opportunity to work with such a great group of students. It was incredibly rewarding to see their enthusiasm and to actually witness the salamanders! We hope to see KLT on our land again soon!”





Wider Reach



Partner Organizations



Member Support



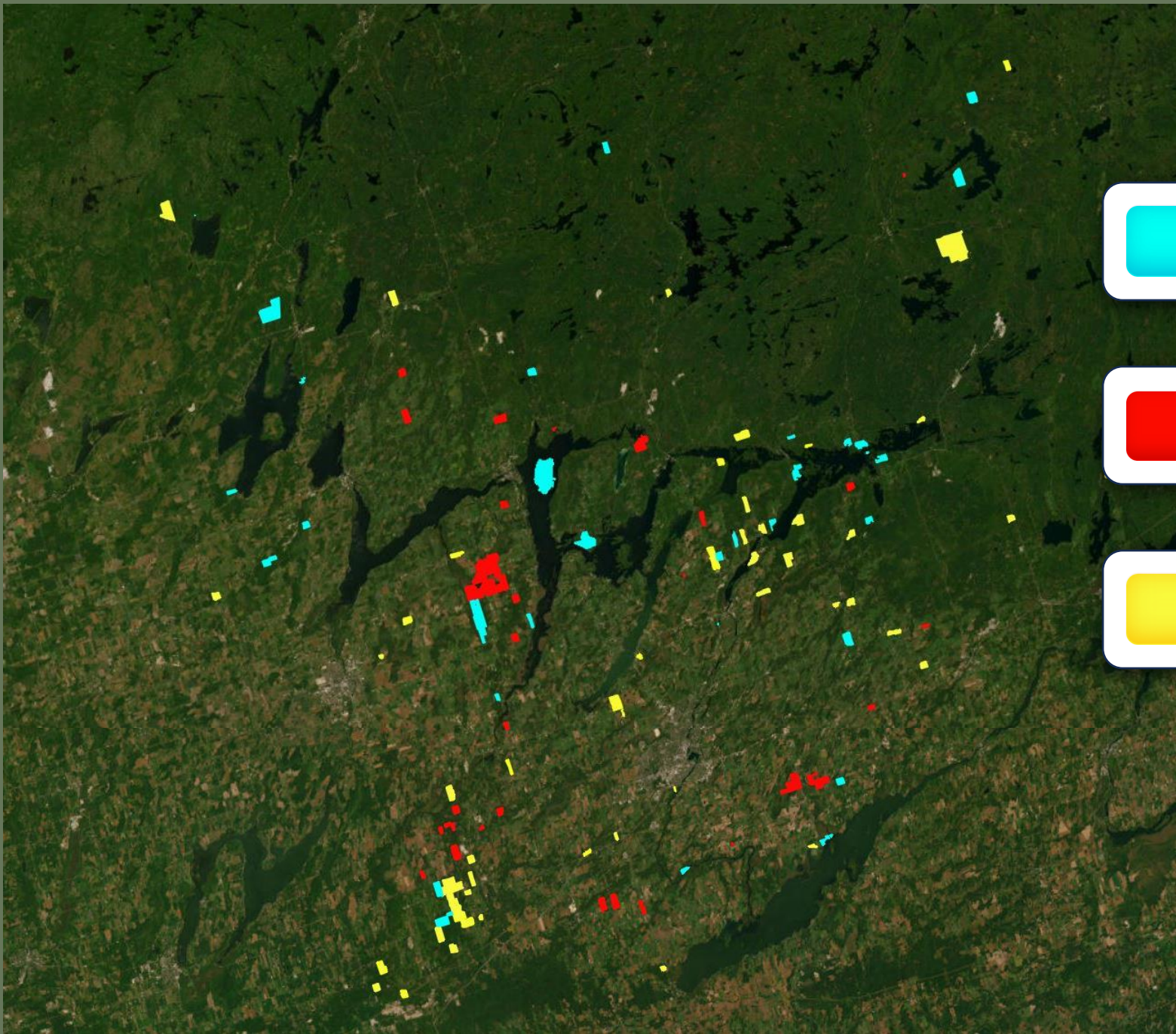
Project Implementation



Landscape Level Conservation



“We didn’t know how well we were doing with our ecology efforts until KLT did a physical assessment of our land. **It opened our eyes** to a fuller picture of our farm ecosystem.”



KLT Protected Properties
(5350 acres)



PIC Confirmed Properties
(6401 acres)



PIC In Progress Properties
(7610 acres)

Program growth



30 x 30 Revised

1) PIC: Build a network of landowners that control 20% of the landscape.

2) Leadership: Lead an increase in regional capacity and collaboration



Key Barriers to 20%

PIC technology isn't optimized

- Key outputs are slow
- KLT centric
- Data organization

Financial sustainability

- Burdon of 1:1 support
- Funding sources

More stewardship opportunities than capacity to deliver

- Lots of landowner willingness
- Limited local contractor capacity



Key Barriers to 20%

PIC technology isn't optimized

- Key outputs are slow
- KLT centric
- Data organization

Financial sustainability

- Burdon of 1:1 support
- Funding sources

More stewardship opportunities than capacity to deliver

- Lots of landowner willingness
- Limited local contractor capacity



Solutions

Co-build a digital platform that:

- fosters landowner-practitioner engagement
- Practitioner to practitioner engagement
- builds a ground-truthed data set

Invest *and* be more efficient

- 5 regional coordinators
- Membership model
- Link to government programs
- Local collaborative investment

Strengthen local delivery

- Share PIC relationships
- Regional Conservation and Climate Partnership
- Co-hiring
- Contractor and for profit partnerships

2) Lead an increase in regional capacity to:

- a) improve the sustainability of working land and;**
- b) the protection and enhancement of nature and;**
- c) public access to land.**



2) Lead an increase in regional capacity by:

a) Create a shared vision through gathering and a collective impact model

b) create a case for support and raise funds

c) explore ways to support efficiency





The Path to Whole Landscape Conservation



Thom Unrau,
Director Community Conservation

Rachel Barrington,
Partners in Conservation Coordinator