

---

# HIGHLANDS CORRIDOR

Haliburton Highlands Land Trust  
Glenside Ecological Services Limited

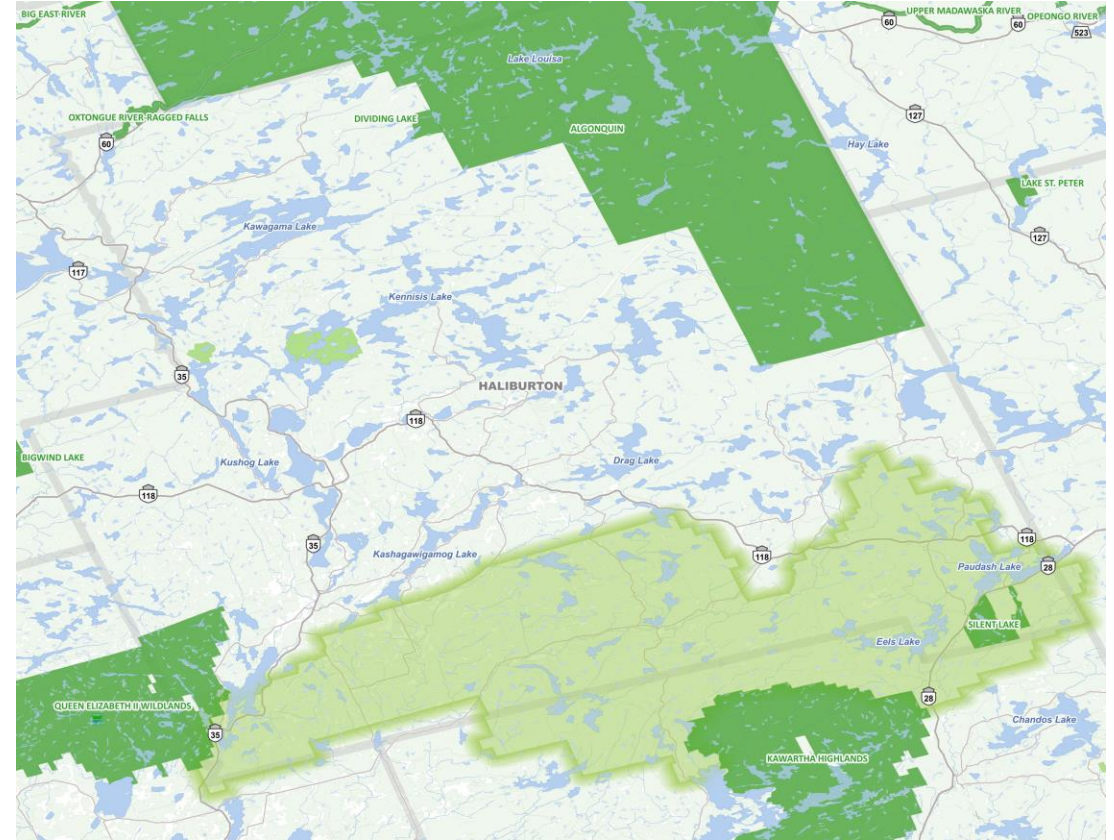




---

# HIGHLANDS CORRIDOR

- ✓ A nature-based solution to building climate change resilience, protecting lands and waters, and maintaining biodiversity





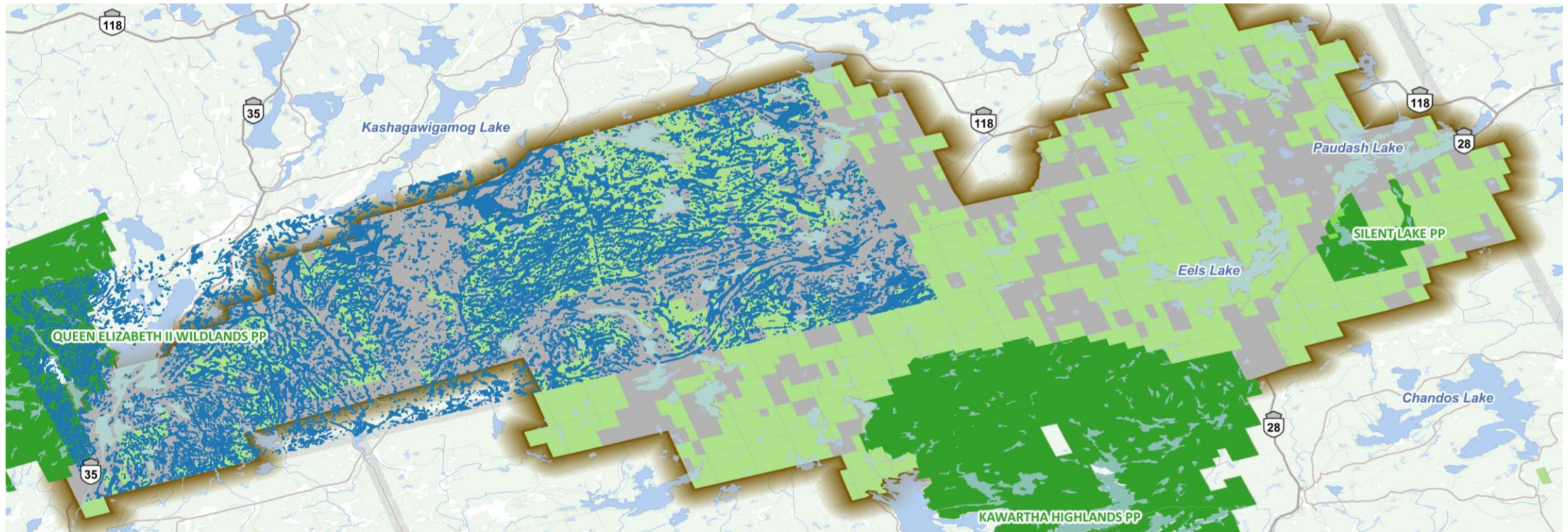
---

# NATURAL INFRASTRUCTURE

The natural environment provides critical services required for building climate change resilience





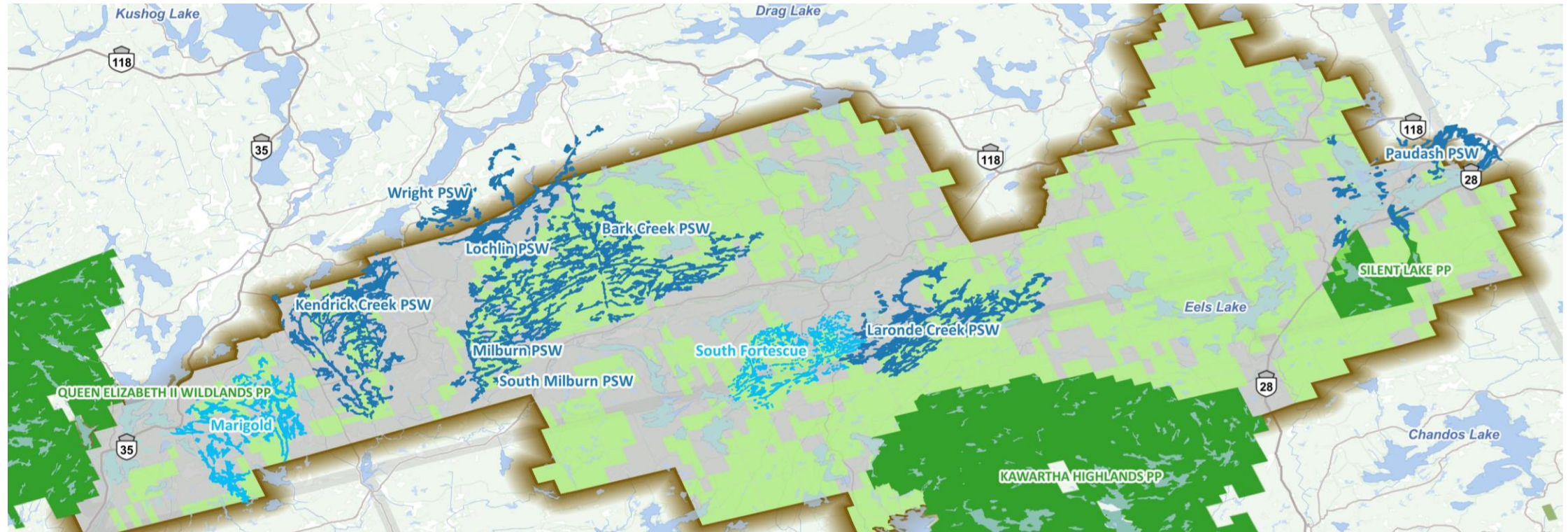


# NATURAL INFRASTRUCTURE

✓ 17.9% representation of wetlands







# NATURAL INFRASTRUCTURE

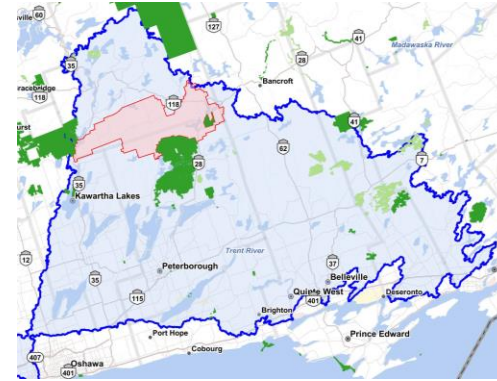
✓ 4865 ha of Provincially Significant Wetlands



---

# NATURAL INFRASTRUCTURE

- ✓ Flood attenuation





---

# NATURAL INFRASTRUCTURE



Carbon storage

---





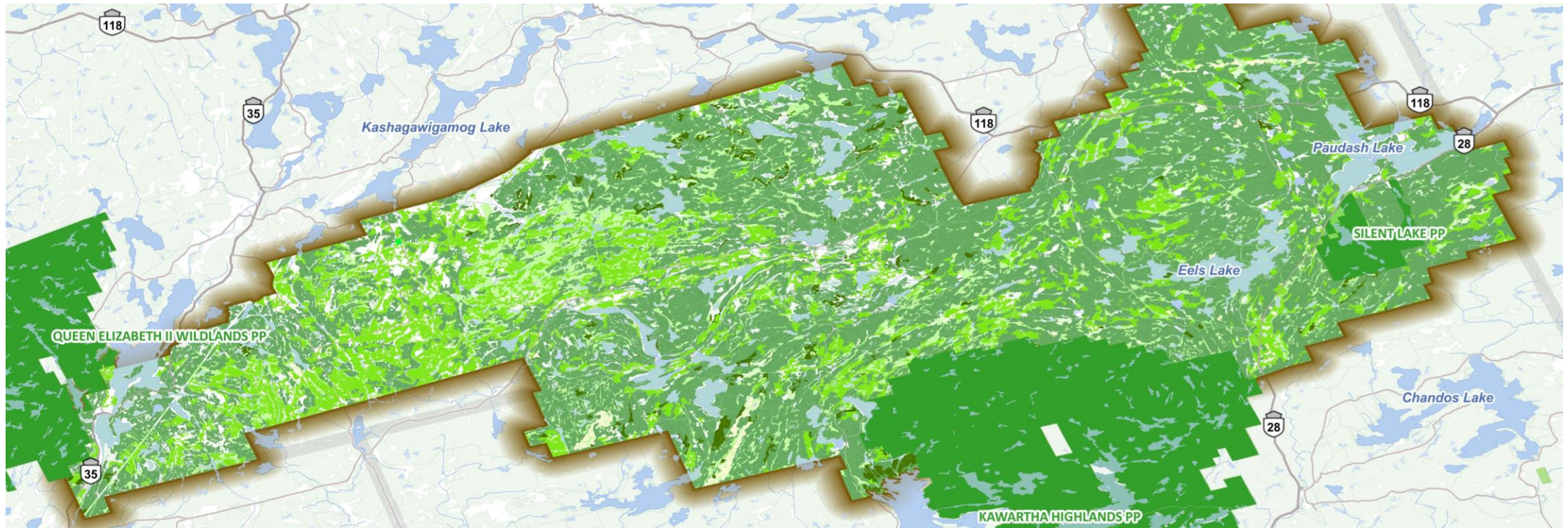
---

# NATURAL INFRASTRUCTURE

Forests are one of the most important solutions to addressing the effects of climate change.







# NATURAL INFRASTRUCTURE

- ✓ 71% forested, 75% mature (■)
- ✓ Largest stand of old growth (■) Hemlock in Ontario





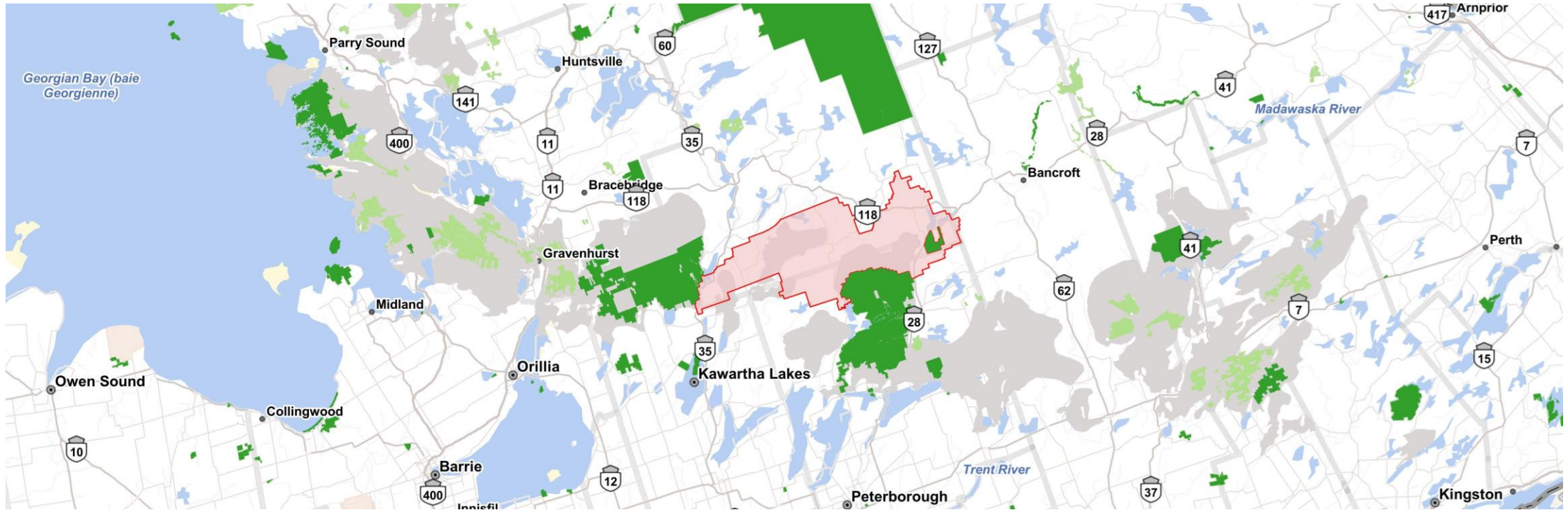
---

# CONNECTIVITY AND BIODIVERSITY

Maintaining biodiversity is critical to maintaining healthy ecosystems  
Climate change will stress local populations  
A species survival will depend on its ability to move across the landscape







# CONNECTIVITY

- ✓ Connects three Provincial Parks and three ANSI's
- ✓ Located at edge of Canadian Shield
- ✓ Unique landscape extending from Georgian Bay to Frontenac Axis





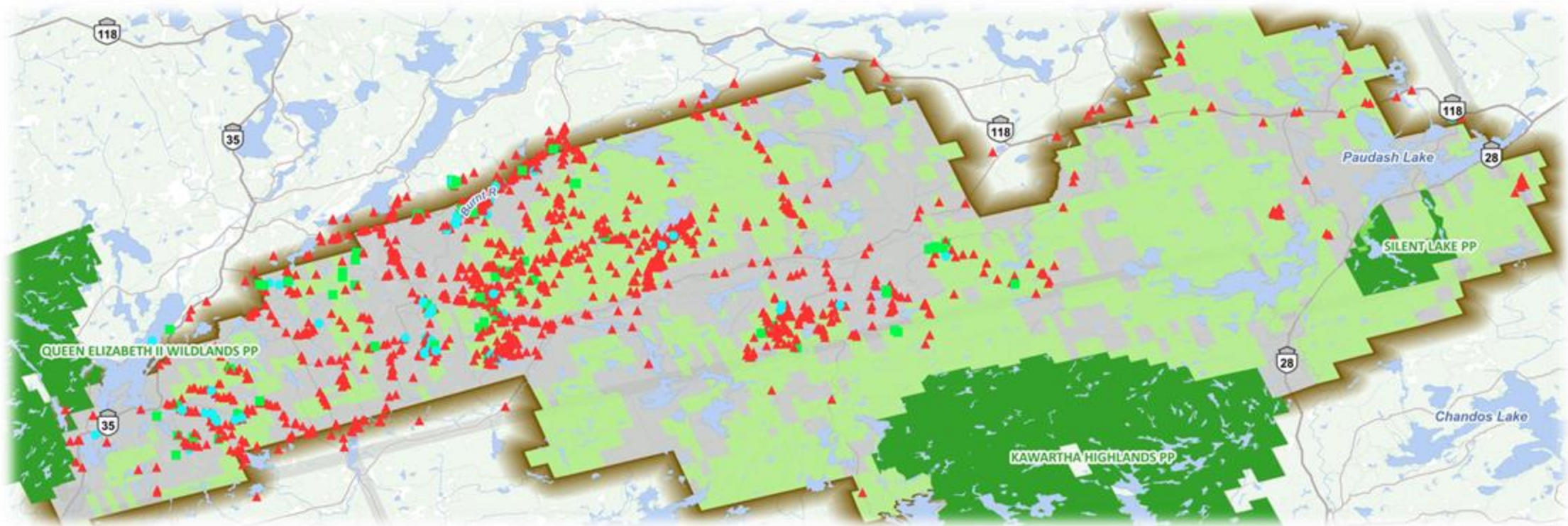
---

# CONNECTIVITY AND BIODIVERSITY

- ✓ Rare species
  - ✓ 42 Federal/Provincial Species at Risk
  - ✓ 30 Provincially Significant species
  - ✓ 48 Regionally or Locally Significant species







# NATURAL INFRASTRUCTURE

- Regionally/ Locally Rare Species
- Provincially Significant Species
- ▲ Species at Risk





---

# CONNECTIVITY AND BIODIVERSITY

- ✓ 3-year project with 5500 community volunteer hours dedicated to the study and implementation of a turtle barrier wall and underpass designed to enhance connectivity





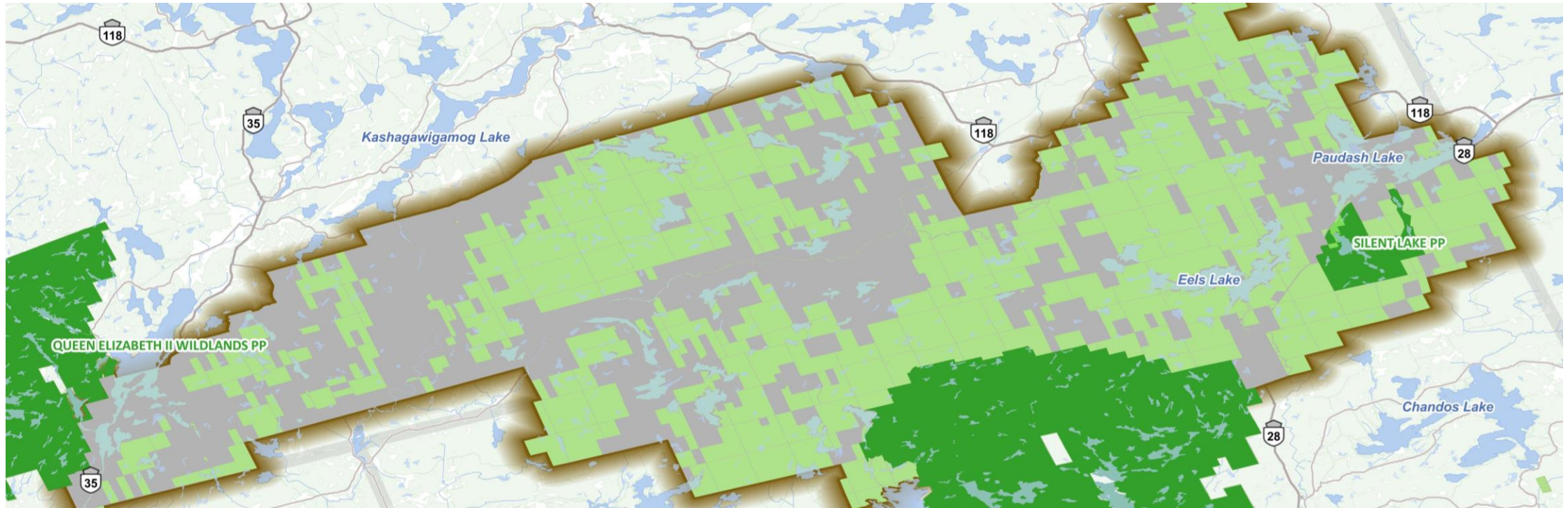
---

# ECONOMICS

- ✓ Recreation and tourism are vital components of our economic model
- ✓ Maintaining healthy lakes and ecosystems ensures the sustainability of these industries





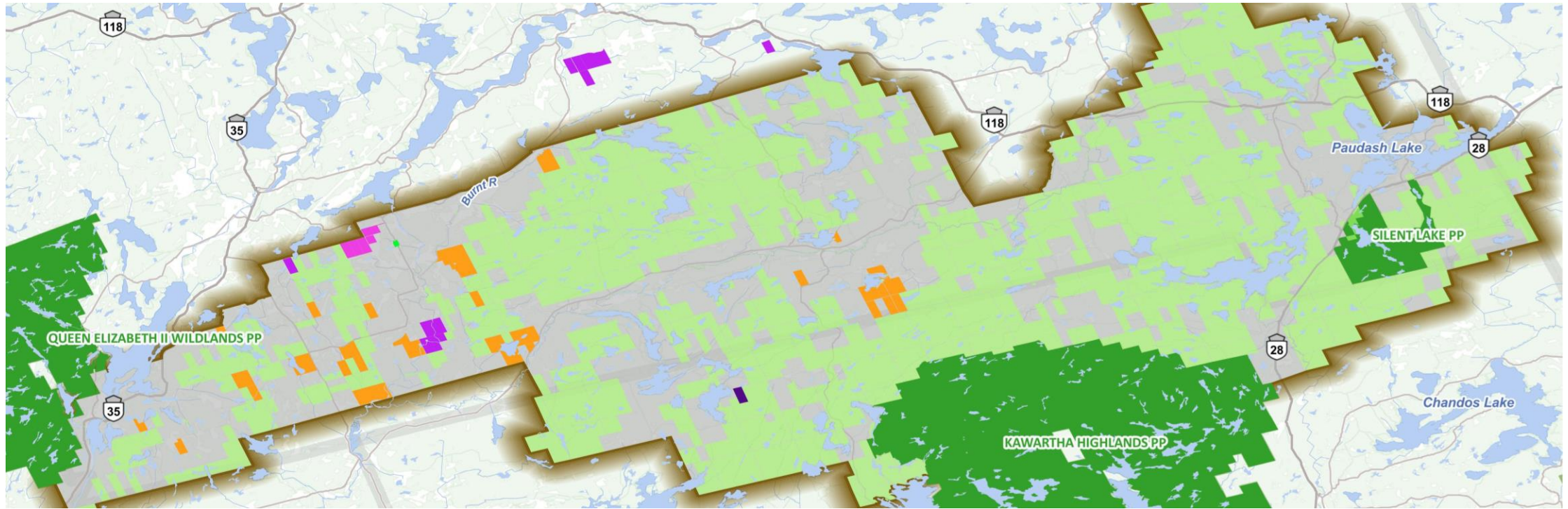


# OPPORTUNITY

- ✓ 60,000 ha of unceded crown land (■)
- ✓ Committed to protecting 30% of our land by 2030
- ✓ Only 10.7% of Ontario is currently protected
- ✓ Limited opportunities in Central and Southern Ontario







# PARTNERSHIPS

- ✓ 1848 ha of Partners in Conservation
- ✓ 290 ha of Land Trust property
- ✓ 190 ha of Municipal Park







# OUR STRATEGY FOR BUILDING THE CORRIDOR

- ✓ Seek protection of unceded Crown land as a conservation reserve.
- ✓ Build partnerships with private landowners to promote good stewardship and enhance connectivity.
- ✓ Find opportunities to work with other stakeholders and government to ensure long-term protection.
- ✓ Consult with First Nations to identify traditional uses and knowledge of the Highlands Corridor.
- ✓ Continue ecological research





# SUPPORTERS



An agency of the Government of Ontario  
Un organisme du gouvernement de l'Ontario



This project was undertaken with the financial support of:  
Ce projet a été réalisé avec l'appui financier de :



Environment and  
Climate Change Canada

Environnement et  
Changement climatique Canada

North Kawartha Lakes Association



Foundation  
Fondation